

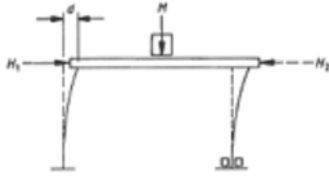
Stability and strength of tables test

BS 4875 describes methods for determining the strength and stability of tables. Part 5 determines the strength of tables. Part 6 deals with the stability of the tables.

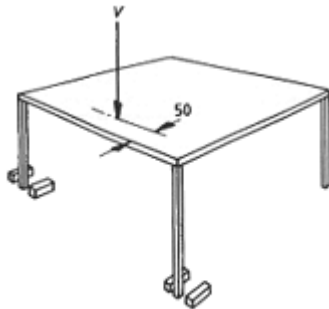
The tests demonstrate the ability of a product to give satisfactory service in its intended environment. They reproduce normal and common types of misuse. They do not reproduce any abuse to which the article may be subjected.

Testing in industry

Static tests



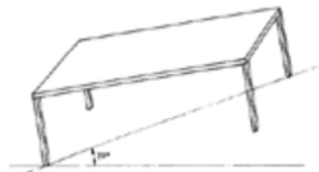
A downward and sideways force is applied 10 times to different parts of the product. The mass of the load is not less than 17kg. The product should be secured to the floor.



Stability test

The product is placed on the floor, prevented from sliding and a vertical force application device is positioned 50 mm from the edge for the vertical test. To test the horizontal impact the impactor strikes the edge of the article at the position likely to have the most adverse effect, for instance the top edge.

V = vertical force
Dimension in millimetres



Drop test

This test, as shown in the diagram, is done 10 times.



Testing in school

Similar tests to industry can be carried out.

A weight of 17kg can be placed on the table and left for a week. The level of the top should be checked with a spirit level before and after the test.

Your own force can be used to push the table, making sure that it does not slide by clamping the legs before the test.

A weight can be placed on the edge of the table to ensure it does not tip.

Your results should be recorded. Any improvements to joints and/or manufacturing methods should be recorded.